

# Large Property: Mapping & Inventory



At Rainbow Treecare we map the property of every client. Maps are crucial for accurate treatments by our technical crews and continued maintenance of your landscape. Maps provide the means in determining the success of our efforts in managing the health of your trees. For small properties a hand-drawn map is sufficient. For larger properties, neighborhoods, golf courses or communities, maps built using global positioning systems (GPS) and geographic information systems (GIS) will insure that every tree in the landscape is accurately documented. We call this form of mapping a landscape inventory.

## A landscape inventory provides:

### Tree Mapping\*

- Tree Location (Longitude/Latitude Coordinates)
- Tree Identification (Genus & Species)
- Tree Size (Diameter at Breast Height or DBH)
- Tree Value (Cost for Replacement)

### Tree Assessment\*

- Tree Condition (Structure)
- Tree Stresses (Environmental concerns)
- Tree Health (Diseases & Insects)
- Recommendations (Proposed Tree Care)
- New Tree Planting Locations

*\*Provided by ISA Certified or Board Certified Master Arborists*

A complete map and inventory will assist in the comprehensive management of large properties by locating structures in addition to your trees. By accurate identification of paved surfaces, sprinkler heads and underground water, sewer and electric lines, any managers responsible for the maintenance of the landscape will be able to coordinate efforts in an efficient manner.

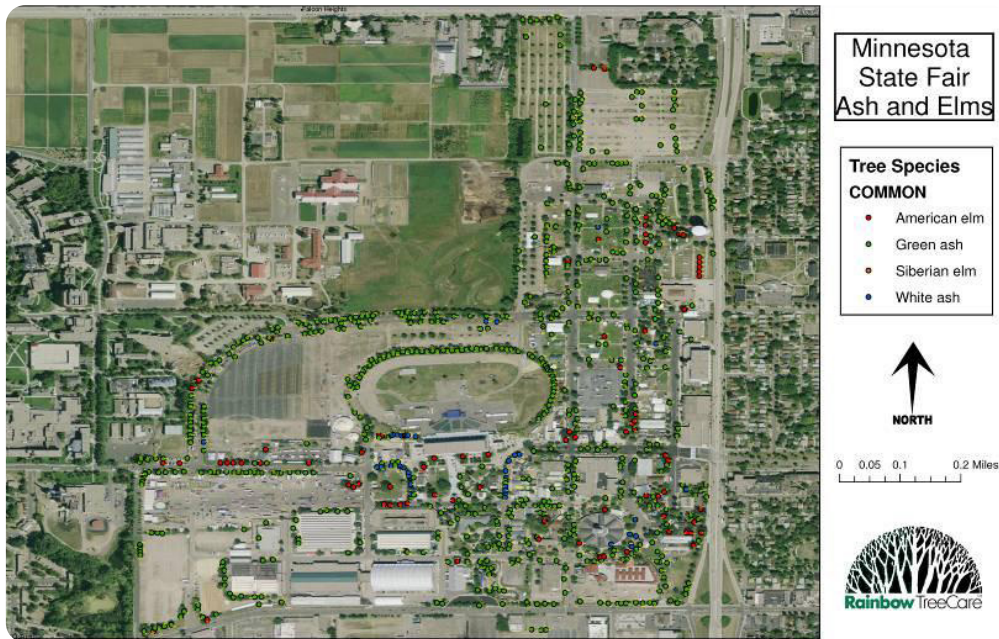
## Inventory Software

We use the most current software in the industry so all maps and inventory data are secure and usable on any platform. All of the information we collect is stored on our servers so we can restore your copy at any time if it is lost or corrupted. While some inventory services require annual subscriptions, we do not. Once we complete an inventory the data is yours to use as you wish.

- Trimble GeoXT© used to collect field data points and input information into our inventory system.
- ArcPad© & ArborVue© software is used to calculate tree value.
- ArcView 9.3© software is used to create full color landscape maps.
- MS Excel© software is used for data analysis and data storage.



A Tablet is used to map and aid in tree inventory.



### Ash and Elm Tree Inventory for the Minnesota State Fairgrounds

Using inventory and mapping data collected on the 89 Elm and 676 Ash trees at the Minnesota State Fairgrounds we know that the value of those trees is approximately \$2,950,155. This does not include their value to storm water run-off, shading and carbon capturing. We can use the same data for valuation stored in an Excel© spreadsheet and plug it into the US Forest Service I-Tree software to calculate the environmental benefits of each tree to the Fairgrounds and the City of Saint Paul.

How much do your trees provide to you and your neighborhood?  
 Call Rainbow Treecare to (inventory them) and find out.